

Instructions for Using Verse Database

The verse database and printing utility has been evolving throughout this year and we are now on the 9th edition of this document. The website has recently gone through a 'make over', which in our opinion makes it look more professional.

To access the utility you can now open it straight from the menu on each page of the website. Here is a view showing the home page and the link to the database:

1066 CARDS 4U

Main Menu

- Home
- Links
- Techniques
- Verses**
- Contact Us
- News
- Gallery

Verses utility is now on the main menu!

Religious Holidays

- 17 Nov- Gurd Nanak Dev Sahib birthday - Sikh
- 21 Nov- Yule - Christian
- 24 Nov- Gurd Tegh Bahadur Martyrdom - Sikh
- 25 Nov- Day of the Covenant - Baha'i
- 28 Nov- Ascension of Abdul-Baha - Baha'i
- 28 Nov Thanksgiving
- 28 Nov-Dec 5 Hanukkah
- 30 Nov Saint Andrew's Day

NEW LOOK website!
Smarter looking site, but unfortunately as the Forum has not been used since the launch we have decided to remove it.
However if you have any ideas or suggestions please use the Feedback Form on the contact us tab.

We have added a few other festivals/holidays (D'Wail, Independance Day and St Patrick's Day)

UPDATE Now version 2.8 - To the Verse Printing Utility! SEE NEW INSTRUCTION PDF file. (13th August 2012)

NEW! Verses for Halloween and Thanksgiving!

A form for adding verses has been added to the Contact Us page!

Welcome to our site

Welcome to the website for 1066 Cards 4 U.
We are passionate about card making and we would like to invite you to share your interests in card making with us.

We will endeavour to share with you ideas and information that may be useful and give you inspiration.

You can use our GREETINGS CARD VERSE database which allows you to create inserts for your cards (See menu [Verse's]).

We have many followers across the World, from USA to Russia, however we would like your comments so that we can improve the site. I particular we would like suggestions and contributions of verses for non Christian and other ethnic religious festivals. All contributions in English please, so that we can moderate them. (See link to form on Contact Us page)

To all our followers in Mountain View, CA, we would love to hear from you, as you are the most prolific followers of this web site. Please contact us on:
enquiry@1066cards4u.co.uk
See you SOON!

© 2011 Ecologic, Inc. All rights reserved. HTML Editor Theme by CoffeeCup Software.
© 2012 Content 1066 Cards 4U. All rights reserved.

Home Links Techniques Verses Contact Us News Gallery

Instructions for Using Verse Database

Because the database is getting quite large it is difficult to know exactly what moods are available for each event. For this reason we have introduced a view page. To accommodate this we have introduced a menu page, where you can choose to either view the events or proceed to the Verse Printing Utility.

Main Menu

- [Home](#)
- [Links](#)
- [Techniques](#)
- [Verse's](#)
- [Contact Us](#)
- [News](#)
- [About Us](#)
- [Gallery](#)

VERSE UTILITY MENU

This menu allows you to choose whether to go directly to the printing utility or view events, but showing all possible moods available.

Now you can type your own verse and print it!

[Verse Printing Utility](#)

[Event Viewer](#)

[Bespoke verse printing](#)

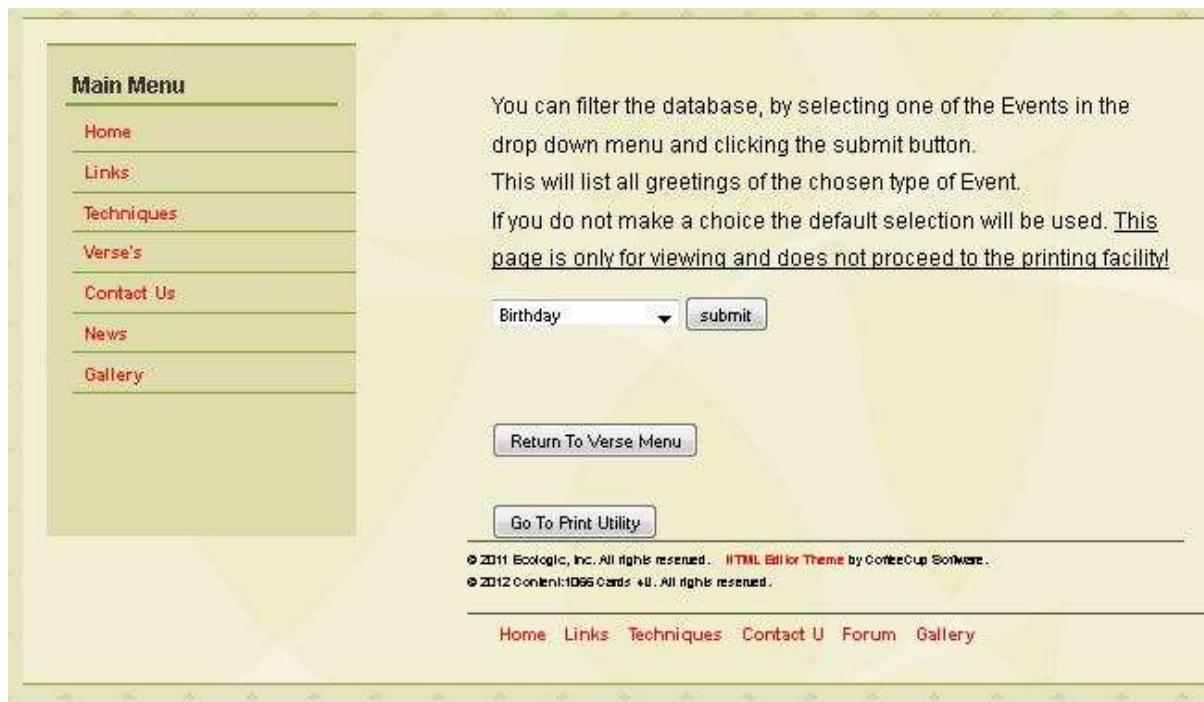
[Go To Print Utility](#)

© 2011 Ecologic, Inc. All rights reserved. [HTML Bill for Theme](#) by [ContraCup Software](#).
© 2012 Content:1096 Cards «U». All rights reserved.

[Home](#) [Links](#) [Techniques](#) [Verse's](#) [Contact Us](#) [News](#) [About Us](#) [Gallery](#)

Instructions for Using Verse Database

If you choose Event viewer from the menu, the following screen is displayed:



A button has been provided to go to the printing utility on this page, so having made your choice you can go on and print it.

Make your choice as to which Event you wish, using the dropdown list box and then click on the submit button. A screen similar to the following will be displayed:



Instructions for Using Verse Database

Buttons have also been provided on both the viewer and the printing utility screens to allow you to return to the Verse Menu.

If you wish to go to the printing utility click on the Verse Printing Utility button to go to the following screen:



Depending on your choice made using the drop down menus, you will filter the database to give a choice of verses for the theme you require:



Instructions for Using Verse Database

From this list make your choice by clicking on the Radio button. At the top of the list is a Submit button that takes you to the page that sets the variables. Click on this to proceed to the next stage:

The screenshot shows a web interface for configuring a Verse Database. On the left, there is a 'Main Menu' with the following links: Home, Links, Techniques, Verse's, Contact Us, News, About Us, Gallery, Religious Holidays, and iPad users. The main content area contains several settings:

- Card Size:** A dropdown menu currently set to 'A5 Portrait'.
- Input Distance from top in mm:** A text entry field.
- Input Font size in points:** A text entry field.
- Text Colour:** A dropdown menu currently set to 'Black'.
- Text Font:** A dropdown menu currently set to 'French Script MT'.
- Border Images:** A dropdown menu currently set to 'No Border'.

At the bottom of the settings area is a 'Submit' button.

From this menu you must choose the following options:

1. Card size – (Dropdown menu)
2. Distance from top in mm – see * below (Text Entry)
3. Font size in points – see * below (Text Entry)
4. Text Colour – Default Black - (Dropdown menu)
5. Text Font – Default French Script - (Dropdown menu)
6. Border Image – Default No Border - (Dropdown menu)

*(See nominal settings list at the end of the Instruction document or print a copy using the link on the Techniques page).

When all of these parameters have been entered click on the submit button at the bottom.

All of the greetings printout on A4 paper, however if you are printing A6 portrait or landscape you may well be able to print 2 inserts by turning the paper around after the first pass. The Cut Sizes are the measurements that you will need to cut the paper after printing.

It may be a good idea to test this on some low quality paper first, until you are happy with the position, and when you are happy click on the Submit button. We normally use a high quality and heavier paper for the finished insert. Some of the fonts take up more room than others, so you will have to experiment so as to fit on the insert. If it is too big it will spill over into a second page, so adjust the font size until it fits on

Instructions for Using Verse Database

one page.

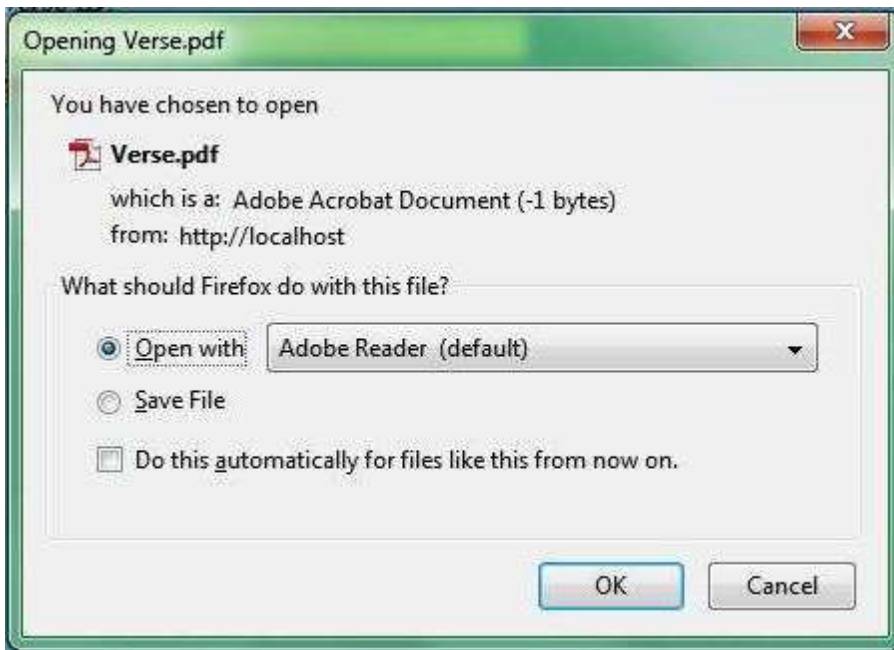
The top position will depend on the length of the verse.

When you have clicked on the Submit button, the screen will go blank and depending on the browser you are using, you will be invited to open or save the Verse.PDF file that has been generated. Unless you are intending to use this insert in the future we recommend that you OPEN the file.

With Internet Explorer 9.0 there will be a prompt at the bottom of the screen asking you to Save/Open.



In Firefox the following will be displayed:



Instructions for Using Verse Database

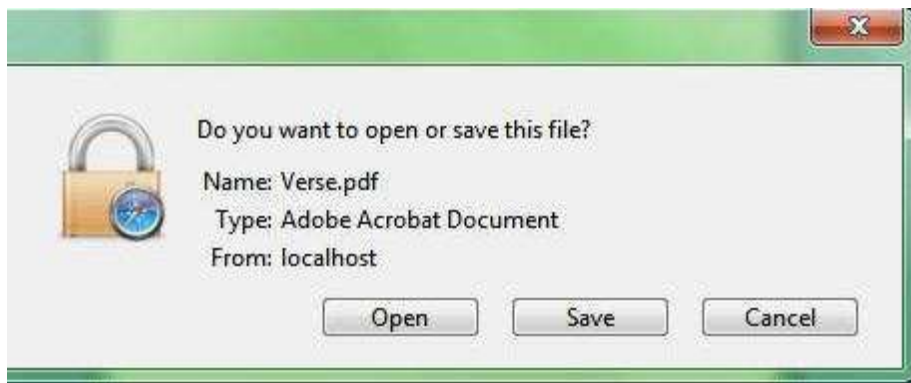
In Opera the following will be displayed:



In Netscape the following screen will be displayed:



In Safari the following screen will be displayed:



IMPORTANT! To use the verse insert utility you must have Adobe Acrobat installed. It can be downloaded from: <http://get.adobe.com/uk/reader/>

Instructions for Using Verse Database

Bespoke Verse Utility

Sometimes you want to personalise a verse by including someones name for instance. Now you can do this using this utility. When you click on the Bespoke Verse button the following screen is displayed:



The screenshot shows a web page titled "BESPOKE VERSE INPUT FORM". On the left is a "Main Menu" with links for Home, Links, Techniques, Verse's, Contact Us, News, and Gallery. The main content area contains the following elements:

- BESPOKE VERSE INPUT FORM**: Title and subtitle "Use this page to type or paste your own verses and then print them."
- Card Size**: A dropdown menu currently set to "A5 Portrait".
- Type your Verse here.**: A large, empty text input box.
- Input Distance from top in mm:**: A text input field.
- Input Font size in points:**: A text input field.
- Text Colour**: A dropdown menu currently set to "Black".
- Text Font**: A dropdown menu currently set to "French Script MT".
- Border Images**: A dropdown menu currently set to "No Border".
- Submit**: A button to process the form.
- Footer**: Copyright information for Ecologic, Inc. and Colibri Themes by ColibriCap Software, and a secondary menu with links: Home, Links, Techniques, Verse's, Contact Us, News, Gallery.

You will notice that most of the items on the screen are familiar, apart from the large box where you can type your verse. You can type directly into this box or cut and paste from other documents. When you have typed in the verse and set the variables you submit the form and this will produce the PDF file that you can print and use for your card.

Instructions for Using Verse Database

Nominal settings for Verses

Card Size/Orientation	Top (mm)	Font (pts)	Paper Orientation	Cut Size w x h
A5 Portrait	58.00	24	Landscape	297 x210 mm
A5 Landscape	190.00	24	Portrait	210 x 297 mm
A5 Single Portrait	56.00	24	Landscape	148 x 210 mm
A6 Portrait	25.00	22	Portrait	210 x 148 mm
A6 Landscape	130.00	22	Landscape	148 x 210 mm
A6 Single Portrait	25.00	22	Portrait	105 x 148 mm
7" x 5" Portrait	45.00	26	Landscape	10" x 7"
7" X 5" Landscape	160.00	26	Portrait	7" x 10"
6" X 4" Portrait	25.00	24	Landscape	8" x 6"
6" x 4" Landscape	105.00	24	Portrait	6" x 8"
DL Portrait	42.00	22	Portrait	198 x 210 mm
DL Landscape	120.00	22	Portrait	210 x 198 mm
140 x 115mm Portrait	35.00	22	Landscape	230 x 140 mm
150 x 95mm Portrait	35.00	22	Landscape	190 x 150 mm
150 x 115mm Portrait	35.00	22	Landscape	230 x 150 mm
160 x 115mm Portrait	35.00	24	Landscape	230 x 160 mm
160 x 115mm Landscape	135.00	24	Portrait	160 x 230 mm
170 x 115mm Portrait	40.00	24	Landscape	230 x 170 mm
170 x 115mm Landscape	140.00	24	Portrait	170 x 230 mm
170 x 125mm Portrait	35.00	24	Landscape	250 x 170 mm
190 x 115mm Portrait	45.00	24	Landscape	230 x 190 mm
190 x 130mm Portrait	45.00	24	Landscape	260 x 190 mm
210 x 130mm Portrait	50.00	26	Landscape	260 x 210 mm
120mm SQ Portrait	25.00	22	Landscape	240 x 120 mm
120mm SQ Landscape	145.00	22	Portrait	120 x 240 mm
125mm SQ Portrait	25.00	24	Landscape	250 x 125 mm
125mm SQ Landscape	150.00	24	Portrait	125 x 250 mm
130mm SQ Portrait	25.00	24	Landscape	260 x 130 mm
130mm SQ Landscape	160.00	24	Portrait	130 x 260 mm
135mm SQ Portrait	30.00	24	Landscape	270 x 135 mm
135mm SQ Landscape	175.00	24	Portrait	135 x 270 mm
145mm SQ Portrait	35.00	24	Landscape	290 x 145 mm
145mm SQ Landscape	180.00	24	Portrait	145 x 290 mm
150mm SQ Portrait	45.00	24	Landscape	297 x 150 mm
150mm SQ Landscape	195.00	24	Portrait	150 x 297 mm
160mm SQ (Single)	35.00	26	Portrait	160 x 160 mm
190mm SQ (Single)	45.00	28	Portrait	190 x 190 mm
200mm SQ (Single)	60.00	28	Portrait	200 x 200 mm
210mm SQ (Single)	60.00	30	Portrait	210 x 210 mm